



SILVER-GOLD SOCIETY COMPOUND, OPP UNION BANK, MANDPESHWAR ROAD, BORIVALI (W), MUMBAI - 92.
TEL.: 2891 6762 / 2892 1483 / 6522 7588



SERVICES

The Laboratory is open from 7:30 a.m. to 6:00 p.m. for routine work everyday, except Sundays and major holidays. Besides, the Laboratory is open on 3rd Sunday of every month from 8:00 a.m. to 3:00 p.m., especially for the convenience of working diabetic patients.

In addition, emergency services are provided from 6:00 p.m. to 11:00 p.m. on working days and 9.00 a.m. to 12.00 p.m. on Sundays.

One of the Consultant Pathologists or a Senior Technician is always available to answer your queries.

The Laboratory also offers home collection facilities for patients unable to visit the laboratory.

The Laboratory makes considerable efforts to counsel suspected or known betathalassaemia trait patients with the motto of achieving zero birth rate of betathalassaemia major.



DR. JARIWALA LABORATORY

Silver-Gold Society Compound,
Opp. Union Bank,
Mandpeshwar Road,
Borivali (W), Mumbai - 92.
Tel.: 2891 6762 / 2892 1483 / 6522 7588

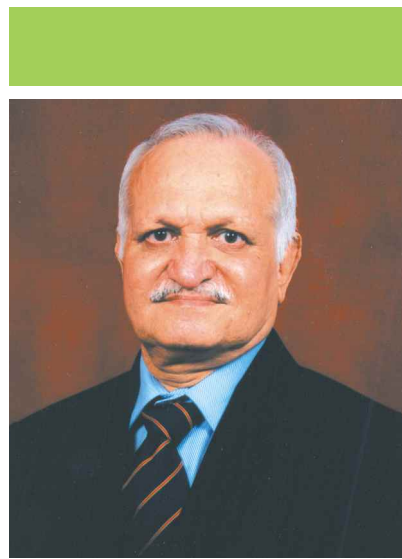
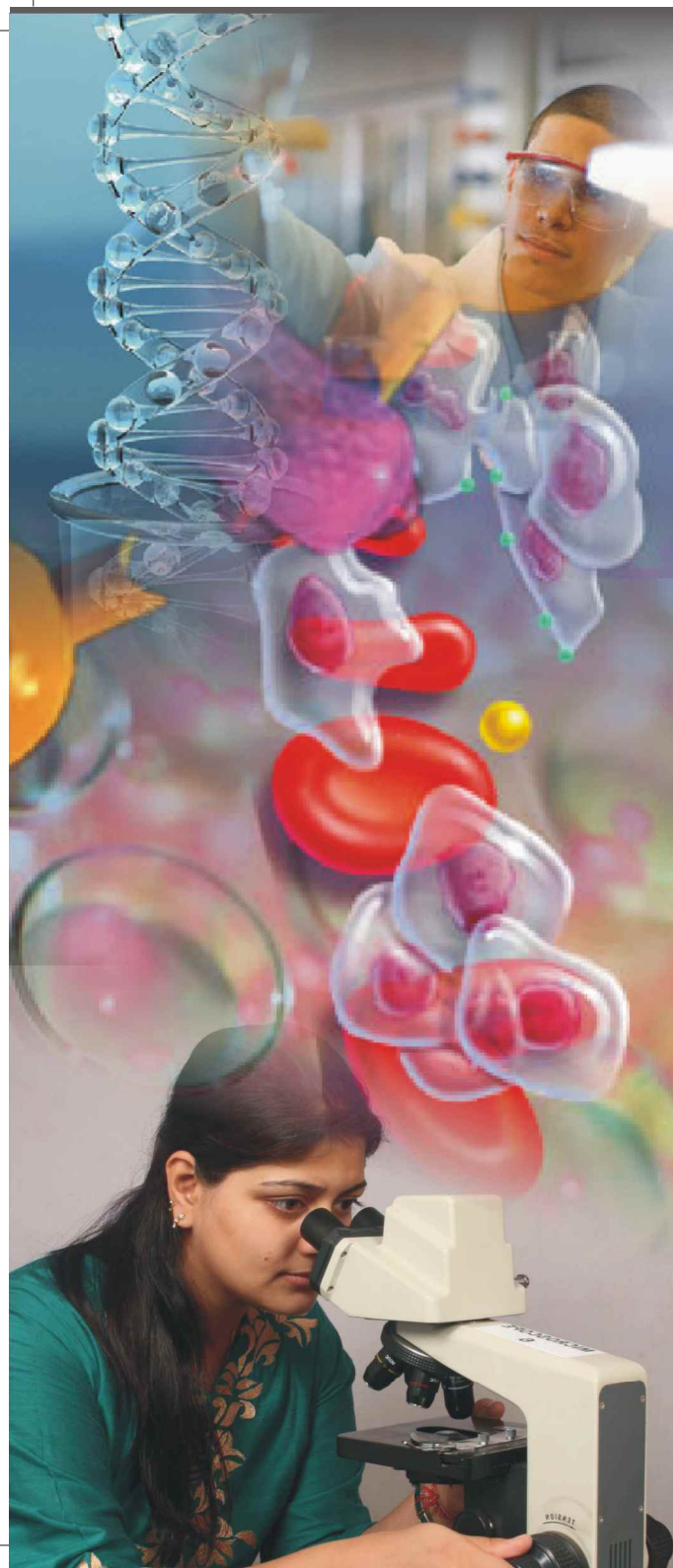
SINCE 1981



DR. JARIWALA LABORATORY

Back Size: 8" x 8"

Cover Size: 8" x 8"



Dr. Harshad Jariwala

Proprietor of Dr. Jariwala Laboratory passed his MBBS from Bombay University in 1974. He further obtained a post graduate Diploma in Pathology & Bacteriology from C.P.S., Parel, Mumbai, in the year 1977. He continued his studies further and acquired a Doctorate in Medicine (MD) in Microbiology in 1978.

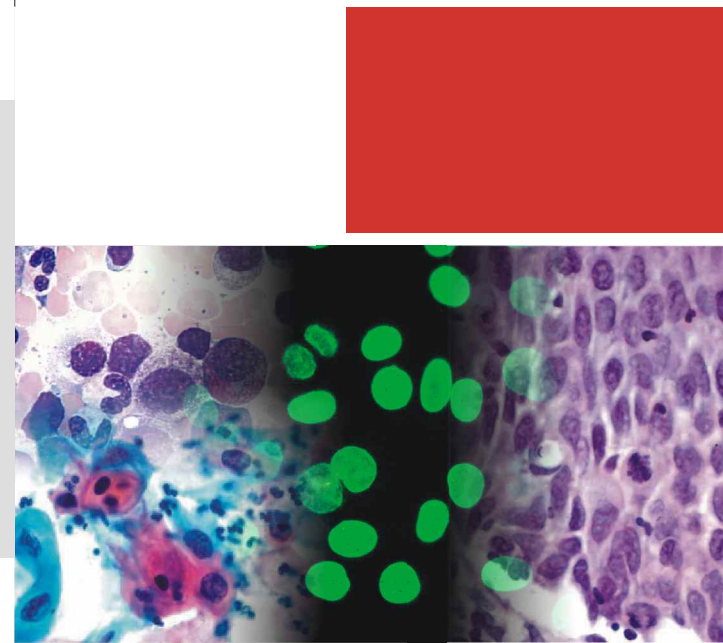
After having acquired these medical qualifications, Dr. Jariwala fully exploited his capabilities by working as a Lecturer and subsequently as a reader in Microbiology at Grant Medical College, Mumbai. He then marched ahead and established his pathology Laboratory in 1981.

“I started this laboratory in 1981 with only one goal : **'Quality Diagnostic services for better patient care'**. Till date, Dr Jariwala Laboratory has lived up to all expectations and will continue to do so...”

Dr. Pratik H. Jariwala

Holds a Masters Degree (MD) in Pathology and renders full fledged services along with the founder.

Following his father's footsteps, he ensures that every patient and clinician benefits up to the hilt from his professional prowess and gainful experience.



MILESTONES

Year 1981:

Established in the year 1981, Dr. Jariwala Laboratory saw a small beginning in a premises measuring 200 sq. feet with a team of three staff members. All the tests then were done manually. With committed and sustained efforts to improve the quality of services, the Laboratory adopted technology-based equipment and process with continual upgradation. In doing so, the Laboratory added newer instrumentation and improved techniques for testing with a view to extend better help to clinicians and patients alike. It is with great pride and pleasure that we take you to the journey of technological milestones that we established during the upgradation process of Dr. Jariwala Laboratory.

1985 :

Semi automated cell counter PC-604 from Erma.

1986 :

Started thalassaemia screening by electrophoresis

1987 :

Semi-automated biochemistry analyzer Polimek EC-4

1996 :

Fully automated cell counter K 1000 by Sysmex

1998 :

Fully automated biochemistry analyzer superstat-919 by Transasia

2000 :

Instalyte ion selective electrode system for electrolytes by Erba.

SF 3000, fully automated cell counter with five part differential by Sysmex

2002 :
Semi-automated coagulation analyzer Coag - Uno by Erba.

2003 :
Fully automated chemiluminescence immunoassay analyzer Immulite - 1000 by DPC, USA

2004 :
Variant HPLC haemoglobin testing system from BIO-RAD, USA

2005 :
Automated system for protein electrophoresis Genio, by Interlab Italy

2006 :
Dry chemistry analyzer Vitros 250 by Ortho clinical diagnostics, USA

2007 :
D-10 HPLC system for HbA1c by BIO-RAD

Fully automated 5 part differential cell counter XT-1800i by Sysmex, Japan.

2008 :
Phox Plus 7 blood gas analyzer by Nova biomedical.

Immunofluorescence microscopy Ayrus, Italy

Approval of accreditation by NABL

2009 :
Electrochemiluminescence analyzer Cobas E411 by Roche.

XL-640 fully automated random access chemistry analyzer by Erba

Automated coagulation analyzer CA-540 by Sysmex, Japan.

LABORATORY AS IT STANDS TODAY

The Laboratory today is abuzz with its activities going on in an area of 1500 sq. feet, with the staff numbering about 50, some of whom are pioneers of the establishment. A team of pathologists provide full-time services. Most of the tests are carried out on fully automated closed system-analyzers which are interfaced with the LIS. Sample bar coding facilitates direct loading of the analyzer and capture of the results generated in the LIS, without active human intervention. The Laboratory has developed a quality management system as per guidelines of ISO 15189 and NABL112. The system is strictly implemented and audited from time to time. The Laboratory has been approved accreditation by NABL.

As a QSE of accreditation process, the Laboratory has laid down a quality policy. This Laboratory policy serves as a credo for the staff inspiring each of them to be committed to his/her duty.

QUALITY POLICY STATEMENT SUMMARY

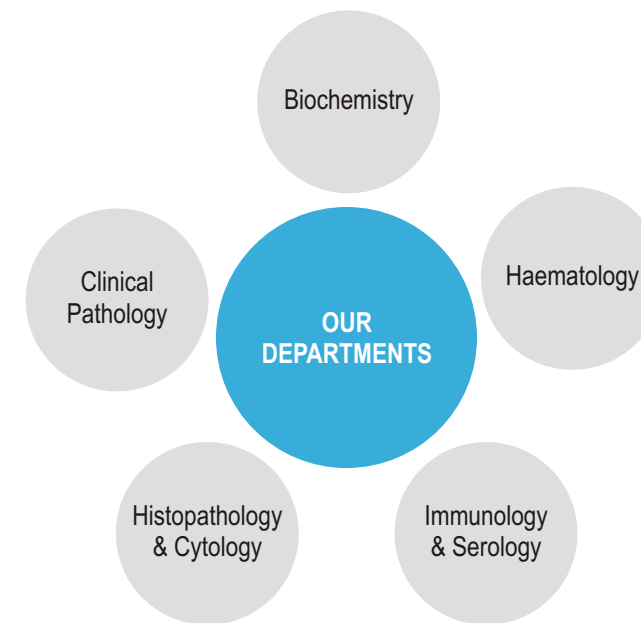
The laboratory is committed to establish and maintain a Quality management system as guided by the accreditation standard ISO 15189 2007.

Such a QMS covers lab's quality assurance programme, pre analytical, analytical and post analytical procedures so that the laboratory has highest **accuracy, precision** and **reliability**.

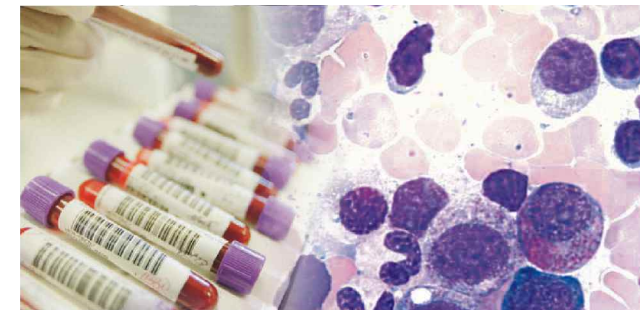
The laboratory has appropriate Equipments for the purpose which are calibrated periodically and well maintained.

The laboratory believes in updating and modernization for which it continuously invests in newer technologies and staff training programmes.

To facilitate proper functioning, the Laboratory is compartmentalized into the following well equipped departments, which are headed by well qualified, experienced and competent supervisory staff.



HAEMATOLOGY



1. XT 1800i (Cell Counter with a five part differential facility, manufactured by Sysmex Corporation, Japan).

2. BIO-RAD Variant Haemoglobin testing system. (HPLC System from Bio-Rad for detection of thalassaemia and haemoglobinopathies. This makes DR. Jariwala's Laboratory one of the few laboratories in Mumbai that use this Gold Standard method.

3. Sedy-12 (Semi automated instrument to analyse ESR).

4. CA-540 Automated coagulation analyzer by Sysmex, Japan.

BIOCHEMISTRY

1. XI 640 Random Access Chemistry Analyzer from Transasia Bio-Medicals (The Laboratory performs Glucose, Urea, Creatinine, Uric Acid, Proteins and Lipids on this).



2. Vitros-250 Random Access Dry Chemistry Analyzer from OCD Johnson & Johnson (All the enzymes, including the liver function enzymes, Amylase, Lypase, CPK and few sensitive analytes like Iron, Ammonia, Magnesium and Phosphorus are performed on this platform).

3. D-10 Haemoglobin Testing System from Bio-Rad (An HPLC System which is dedicated by the Laboratory to perform HbA1c testing).

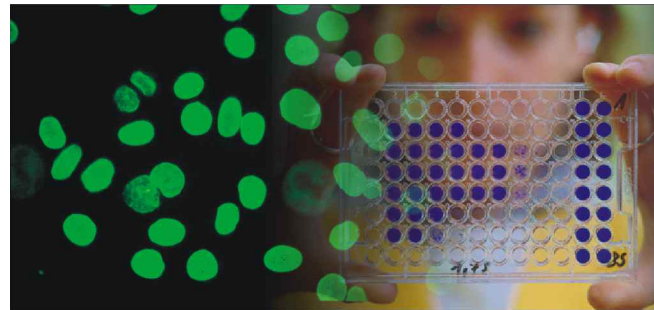
4. pHOX plus c (A blood gas analyzer from NOVA Bio-Medicals which works on ISE principle. Apart from blood gas, this equipment also gives accurate electrolytes including ionized calcium and bicarbonate).

5. Instalyte Electrolyte Analyzer (Gives sodium, potassium and chloride using ISE).

6. Genio fully automated closed electrophoresis system from Interlab Scientific Instruments, Italy (For protein electrophoresis).

IMMUNOLOGY & SEROLOGY

1. Immulite-1000 : Random access chemiluminescence analyzer manufactured by DPC, USA. Supported by a software called Prisca, Immulite-1000 helps in performing the Triple marker test.

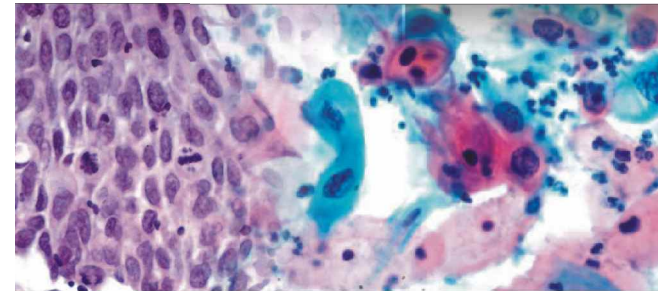


2. Cobas e 411: Both of these instruments i.e., Immulite-1000 and Cobas e 411 become the backbone of immunology department of Dr. Jariwala Laboratory. They are used to perform special assays like TFT, Fertility Hormones, Cardiac Markers, TDMs, Ferritin, Vit B12, Vit D3 and Tumor Markers. Cobas e 411 facilitates HBsAg and HIV Duo testing also.

3. Fluorescent Microscope Ayrus, Italy, (For performing autoimmune testing like ANA).

HISTOPATHOLOGY & CYTOLOGY

Examination of all kinds of tissues, body fluids & pap smears is undertaken by this department. The laboratory also provides facilities for Fine Needle Aspiration Cytology (FNAC) for its walk-in patients.



CLINICAL PATHOLOGY

This department carries out examination of Urine, Faeces, Semen and body fluids. The department uses standard test protocols as per the WHO guide lines and like all other departments is headed by well qualified and experienced staff.

*P*ATIENT CARE *O*UR MISSION
HIGHEST QUALITY OUR COMMITMENT
- Since 1981

